



Techline Technologies, Inc.
Device Specifications WW3-002
GSW Through Hand (Right)



WW3-002

GSW Wound Through Hand (Right)

Patent No. US8,221,129, US8,491,30

TECHLINE[®] Device Specifications
November 4, 2021

Description-

A wearable wound simulation® that represents through-and-through gunshot to the right palm exposing fat, muscle, bone, and tendons. It bleeds from both the entry and exit wounds. It wraps around an actor or manikin and attaches with hook and loop fastening. Blood tubing is integrated into the construction to easily create simulated blood flow. The PATENTED construction with SOFTTECH® materials, provides realism for your training scenario.

The WW3-002 operates with the included WW3-BRP Blood Supply Pump and is also compatible with SKEDCO® brand bleeding simulation equipment (sold separately).

Construction-

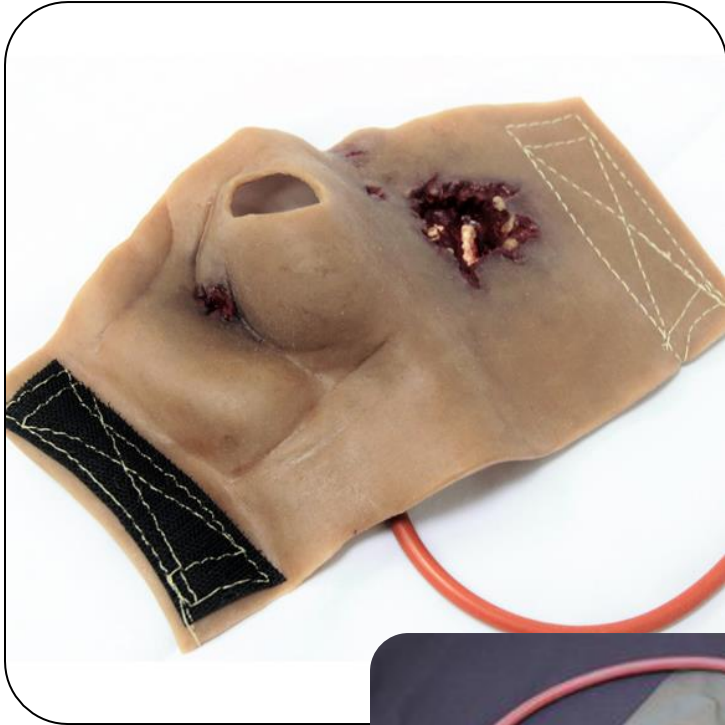
The representative skin and tissue of the WW3-002 is constructed of high quality silicone rubber, with layers of coloration that provide a depth and realism to the product. In addition, the SOFTTECH® material has a realistic feel, and is very durable and UV resistant. The skin also contains a reinforcing fabric that provides strength, and resistance to tear propagation should the skin be punctured or cut. Blood flow is simulated through the integrated tubing with supply connector.

Operation-

The hook and loop fastener is snugged to fit the actor or manikin, and the flaps are fastened together in an overlapping fashion. The blood supply line has a male fitting that is connected to the corresponding female fitting of the blood supply pump with a click-fit. The pump is utilized to provide simulated blood flow to the simulation.

Maintenance-

The simulation should be flushed with clean water at the end of use to clean out the simulated blood lines. The device should be rinsed in clean, warm water and allowed to dry before storage. The device may be washed with mild detergents like dish soap or cleaned with a disinfecting agent like isopropyl alcohol or a diluted bleach solution, as it is durable, and chemically resistant. Allow the device to dry fully before storage to prevent mold or mildew growth.



**WW3-002 GSW Through
Hand (Right)
Light and Dark Tones**