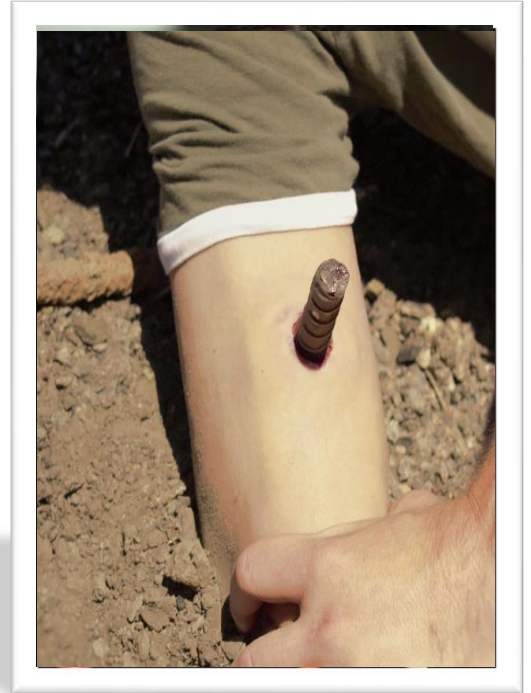




Techline Technologies, Inc.  
Device Specifications WW3-003  
Impaled Object



# WW3-003

## Impaled Object

Patent No. US8,221,129, US8,491,30

TECHLINE<sup>®</sup> Device Specifications

November 4, 2021

**Description-**

A wearable wound simulation® that represents a piece of rebar impaled into the flesh. It wraps around an actor or manikin and attaches with hook and loop fastening. The PATENTED construction with SOFTTECH® and ROCKTECH® materials, provides realism for your training scenario.

The WW3-003 is constructed in two pieces. The main simulation that represents the flesh wound, and a removable piece of replica re-bar that inserts through the wound site.

**Construction-**

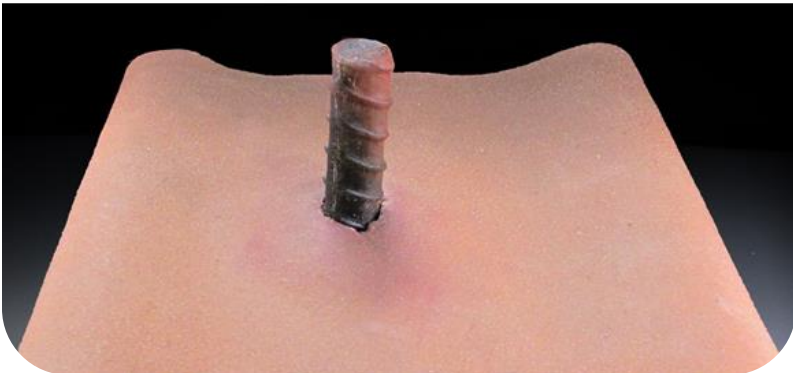
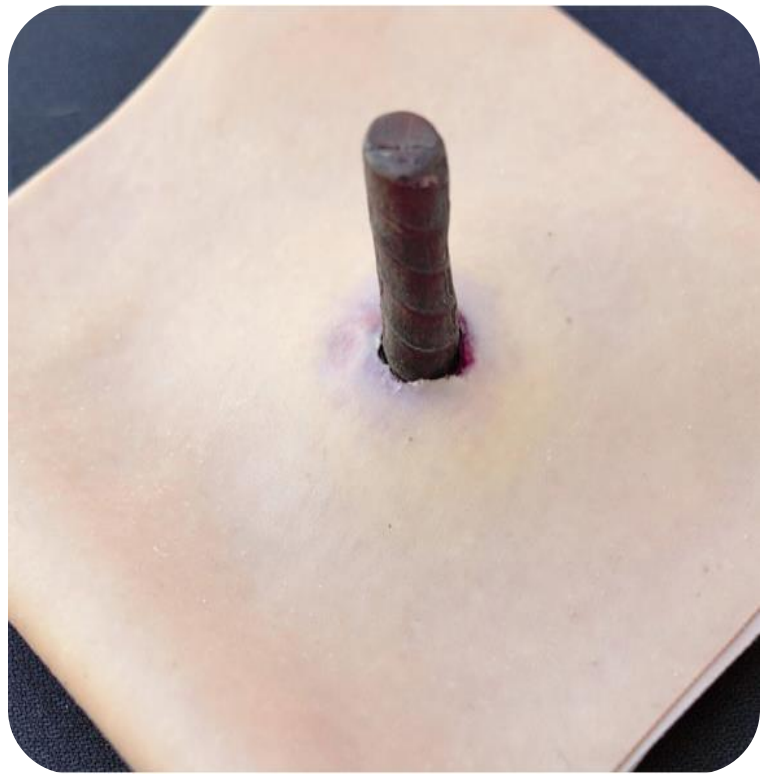
The representative skin and tissue of the WW3-003 is constructed of high quality silicone rubber, with layers of coloration that provide a depth and realism to the product. In addition, the SOFTTECH® and ROCKTECH® materials have a realistic feel and are very durable and UV resistant. The skin also contains a reinforcing fabric that provides strength, and resistance to tear propagation should the skin be punctured or cut.

**Operation-**

The hook and loop fastener is snugged to fit the actor or manikin, and the flaps are fastened together in an overlapping fashion.

**Maintenance-**

The simulation should be rinsed in clean, warm water and allowed to dry before storage. The device may be washed with mild detergents like dish soap or cleaned with a disinfecting agent like isopropyl alcohol or a diluted bleach solution, as it is durable, and chemically resistant. Allow the device to dry fully before storage to prevent mold or mildew growth.



**WW3-003 Impaled Object  
Light and Dark Skin Tones**